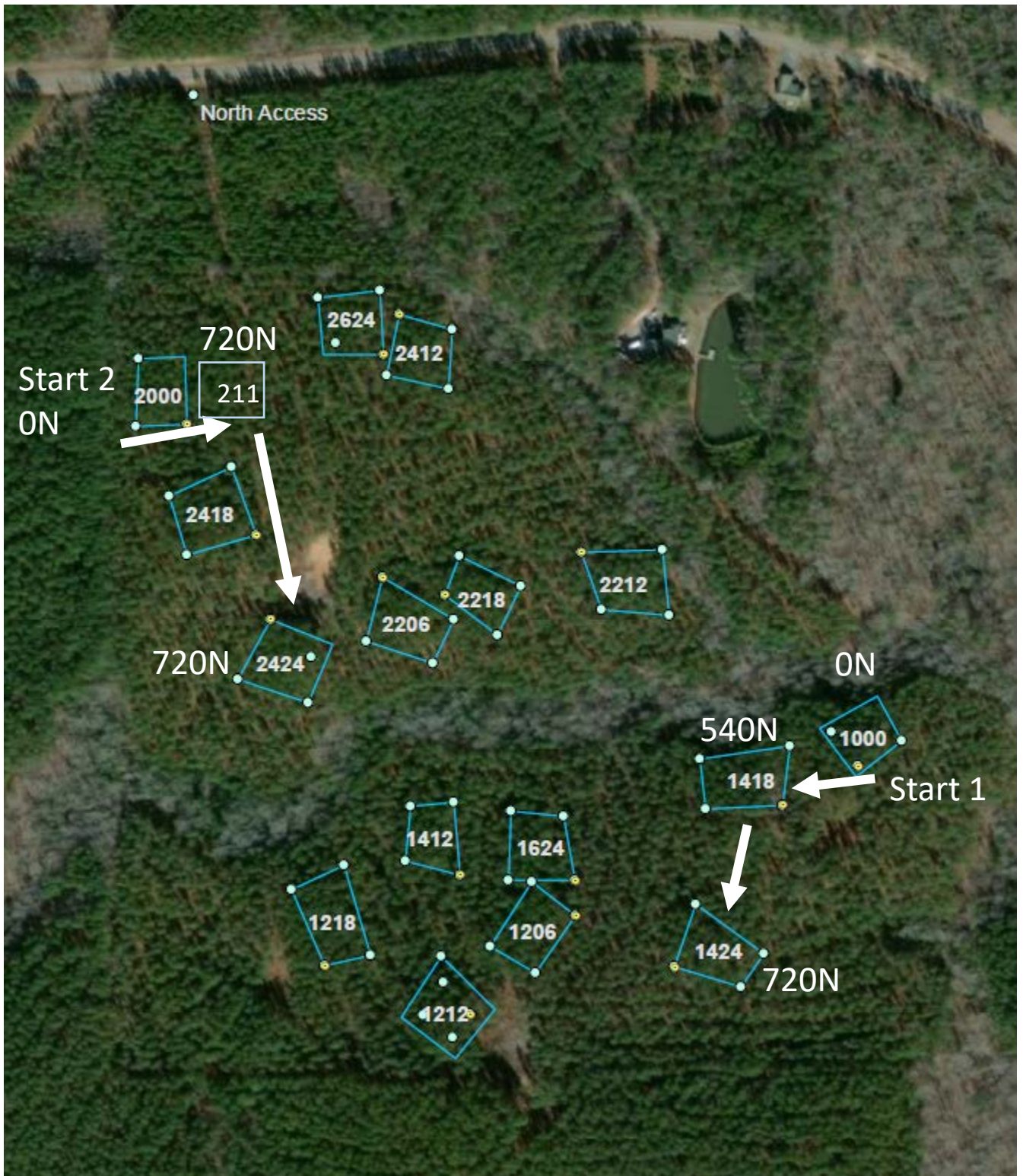


185201 Field Plot Map



US Pine Contact Meeting 2019
Jordan Lumber



FPC Code: A2wekvGgPD

Soils

FPC Major Soil Group: [A] - Clayey

Depth Code: [2] - 5-10 in

Drainage: [W] - Well Drained

Modifier 1 (Nature of Surface): [e] - Eroded

Modifier 2 (Nature of Subsoil): [K] - Kaolinitic

Modifier 3 (Limitations): [M] - Root limited via bedrock (>40 in)

Approximate depth to subsoil: 15 cm

Kind of restriction, if known: Paralic bedrock

Soil Taxonomy: Fine kaolinitic, thermic Typic Kanhapludults

Soil Series / Component Name: Tarrus

CRIF Alternative: E

Percent of Map Unit: 45%

Geology

FPC Geology Group: [Gg]

FPC Description: Granite and Gneiss (Felsic) light colored & low mafic, coarse-grained igneous and metamorphic rocks dominated by feldspar and quartz

Nutrient Status: K, Ca availability

Parent Material (detailed): Slate (Metamorphic - Metasedimentary

- Metasedic - Slate)

Fertility Rating for Loblolly Pine: 4.5

Major Land Resource Area

Southern Piedmont (PD)

FPC Code: A2wekoSrPD

Soils

FPC Major Soil Group: [A] - Clayey

Depth Code: [2] - 5-10 in

Drainage: [W] - Well Drained

Modifier 1 (Nature of Surface): [e] - Eroded

Modifier 2 (Nature of Subsoil): [K] - Kaolinitic

Modifier 3 (Limitations): [o] - Other or NA

Approximate depth to subsoil: 20 cm

Kind of restriction, if known: NA

Soil Taxonomy: Fine kaolinitic, thermic Typic Kanhapludults

Soil Series / Component Name: Hendon

CRIF Alternative: E

Percent of Map Unit: 55%

Geology

FPC Geology Group: [Sr]

FPC Description: Sedimentary Rock with extremely variable clasts and cement mineralogy

Nutrient Status: K availability

Parent Material (detailed): Slate (Metamorphic - Metasedimentary

- Metasedic - Slate)

Notes on Mineralogy: Other

Fertility Rating for Loblolly Pine: 4.5

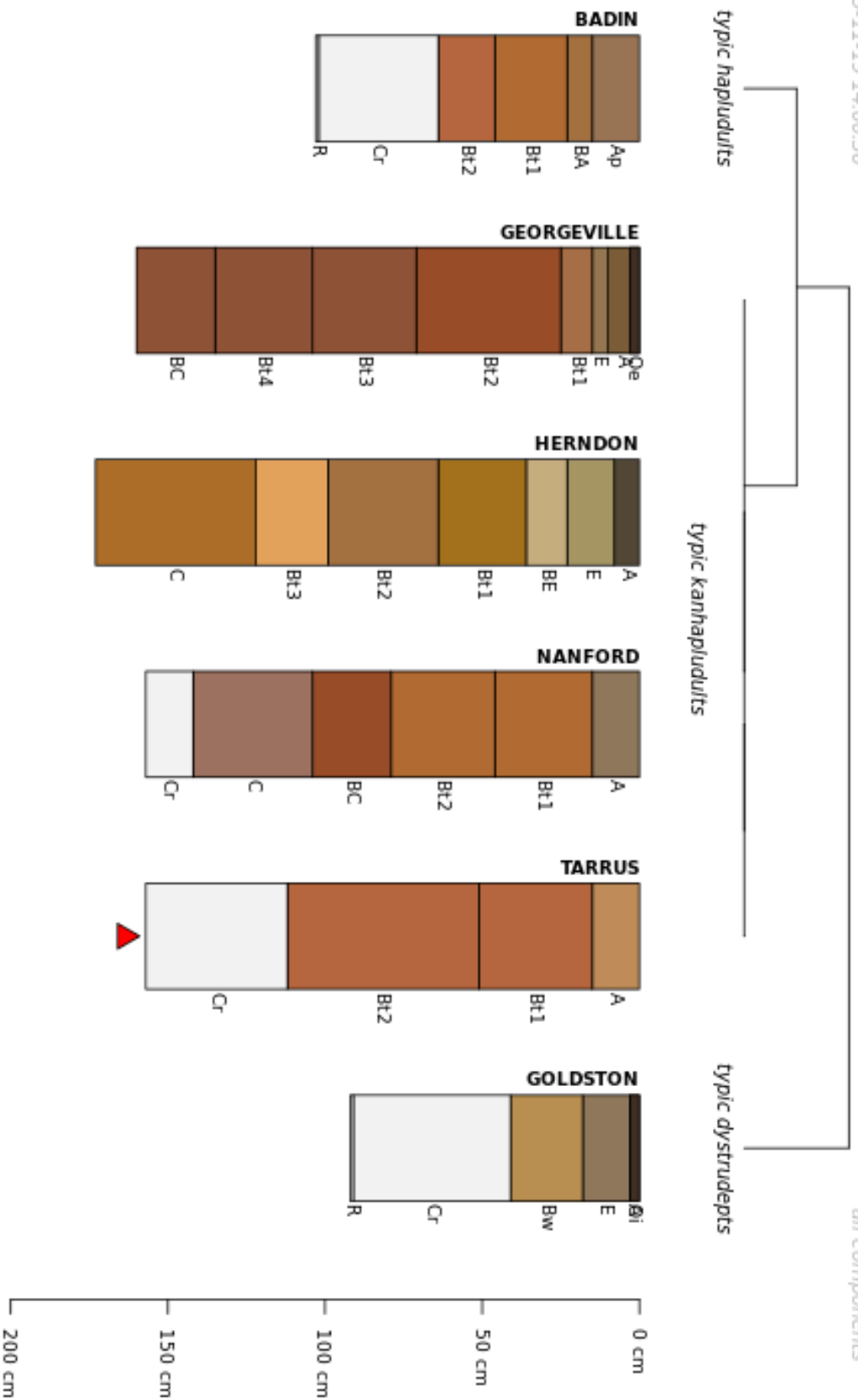
Major Land Resource Area

Southern Piedmont (PD)

FPC US Pine Contact Meeting '19

map.forestproductivitycoop.net

FOREST PRODUCTIVITY COOPERATIVE

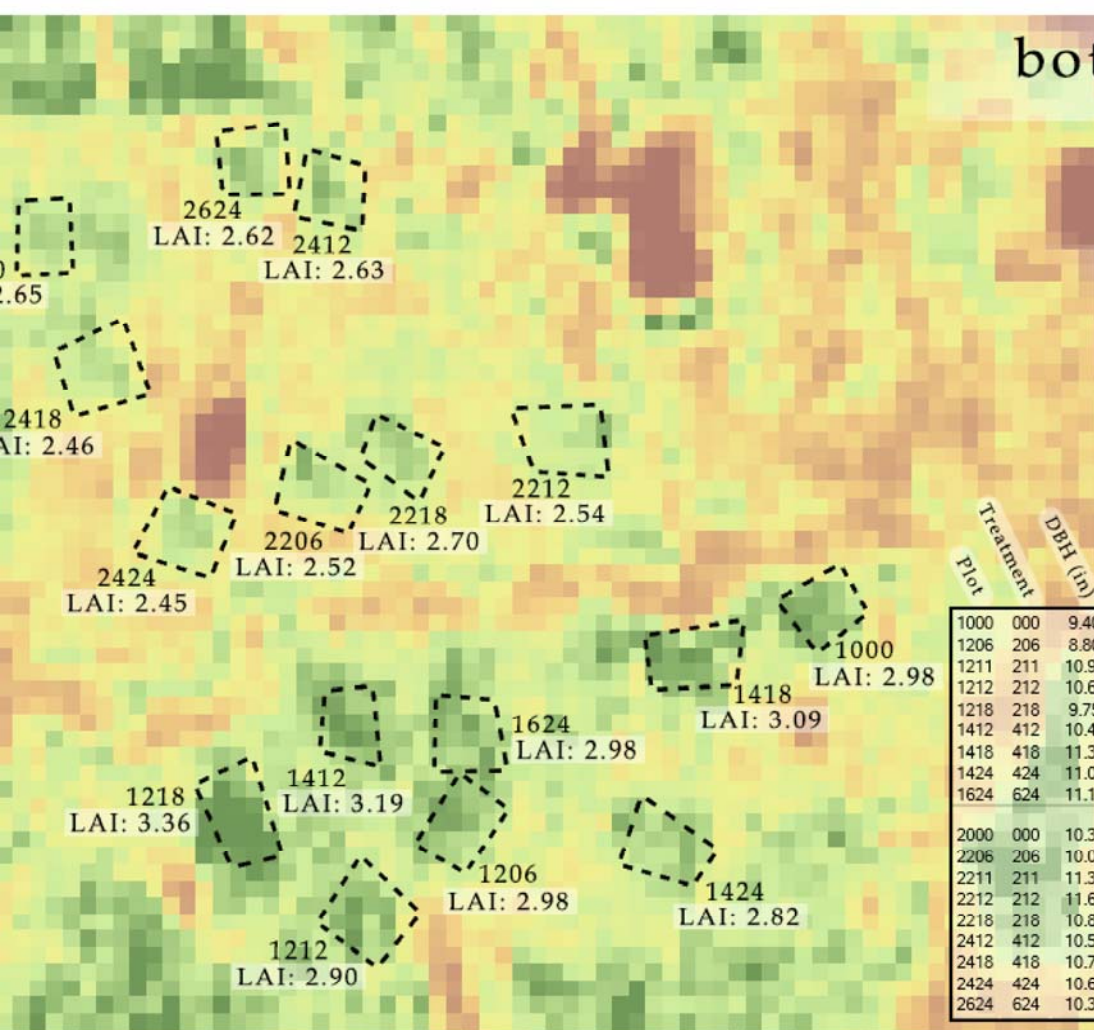
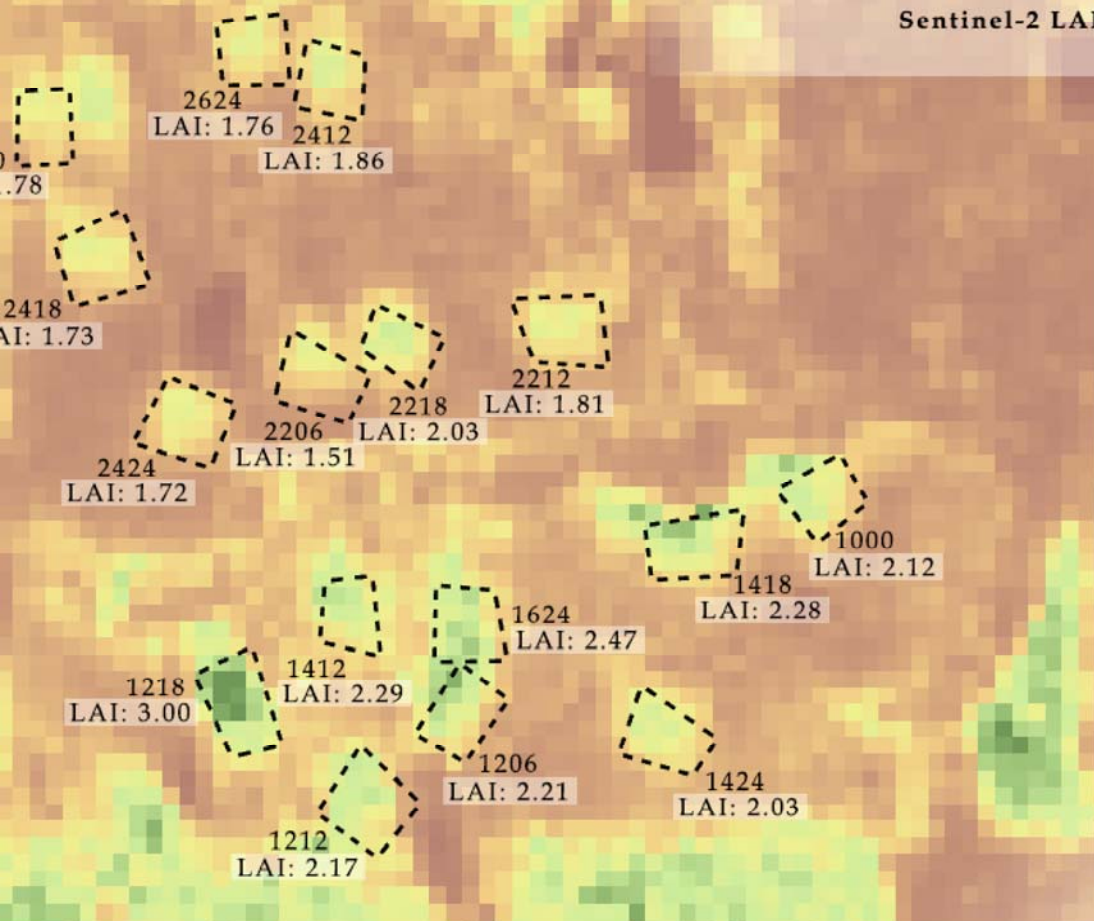


18_5201"

US Pine Contact Meeting '1

Sentinel-2 LAI Model - Draft Manuscript by Cohrs et al.

Expected Publication Date: Early 20



top: 16 Dec 2015

bottom: 10 Nov 2019

Most Recent Plot Summary January 2016 (Year 1)

Treatment Plot	DBH (in)	Dq (in)	Height (ft)	Dom Ht (ft)	Green Weight (tons acre ⁻¹)	Volume (ft ³ acre ⁻¹)	Basal Area (ft ² acre ⁻¹)	Stand Density (stems acre ⁻¹)	Trees per Plot
1000	000	9.40	9.45	56.28	57.46	70.10	2448	97.3	200
1206	206	8.80	8.92	58.27	62.80	152.10	5320	201.3	464
1211	211	10.97	11.00	59.55	60.23	71.20	2466	93.5	142
1212	212	10.62	10.71	60.89	61.80	93.30	3234	119.3	191
1218	218	9.75	9.85	60.91	63.30	157.50	5476	201.2	380
1412	412	10.40	10.44	58.58	58.70	80.00	2778	107.1	180
1418	418	11.32	11.37	63.54	65.30	99.20	3431	121.7	173
1424	424	11.08	11.21	58.13	60.38	77.50	2683	102.8	150
1624	624	11.12	11.15	62.34	63.28	91.90	3181	115.3	170
2000	000	10.36	10.42	57.90	60.22	84.10	2922	113.0	191
2206	206	10.03	10.09	58.04	58.91	89.40	3111	120.3	217
2211	211	11.30	11.33	61.20	61.70	75.80	2624	97.0	138
2212	212	11.61	11.65	56.99	57.50	78.40	2714	107.6	145
2218	218	10.82	10.89	60.29	60.65	94.20	3264	122.2	189
2412	412	10.55	10.60	61.00	61.09	79.60	2762	102.2	167
2418	418	10.79	10.84	59.19	60.26	97.00	3363	128.2	200
2424	424	10.61	10.66	62.25	63.24	86.40	2995	108.4	175
2624	624	10.34	10.37	58.88	60.05	75.20	2611	99.7	170